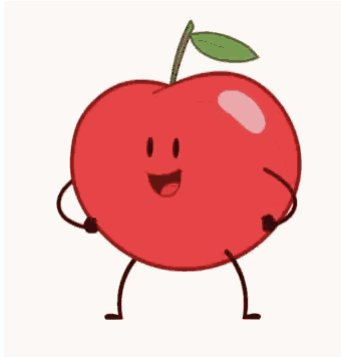
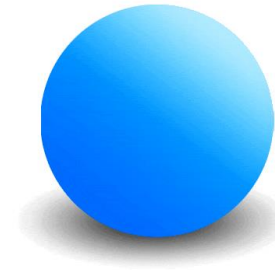


Aa Bb Cc Dd

Aa is for **apple**.



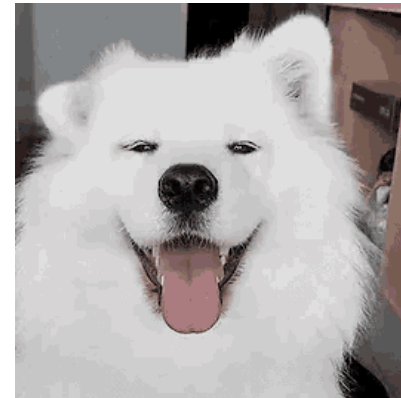
Bb is for **ball**.



Cc is for **cat**.



Dd is for **dog**.



Abc phonics

Ee Ff Gg Hh

Ee is for **elephant**.



Ff is for **fish**.



Gg is for **gorilla**.



Hh is for **hat**.



Abc phonics

I i

J j

K k

L l

li is for **igloo.**



Jj is for **juice.**



Kk is for **kangaroo.**



Ll is for **lion.**



Abc phonics

Mm Nn Oo Pp

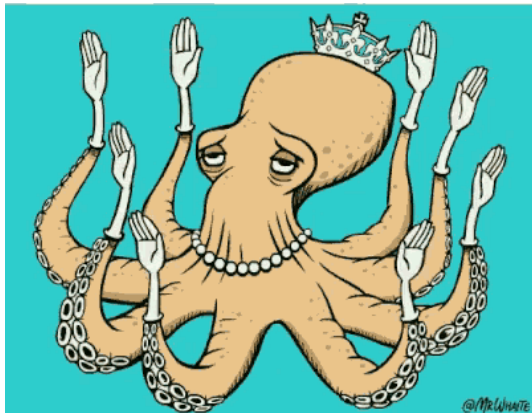
Mm is for **monkey**.



Nn is for **no**.



Oo is for **octopus**.



Pp is for **pig**.



Abc phonics

Qq Rr Ss Tt

Qq is for **question**.



Rr is for **ring**.



Ss is for **sun**.



Tt is for **train**.



Abc phonics

Uu Vv Ww Xx

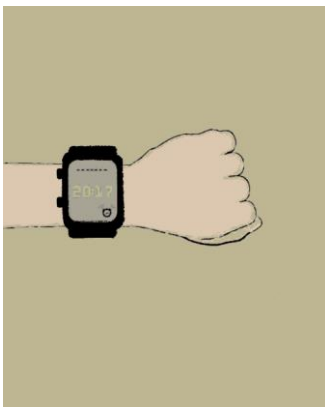
Uu is for **umbrella**.



Vv is for **van**.



Ww is for **watch**.



Xx is for **box**.

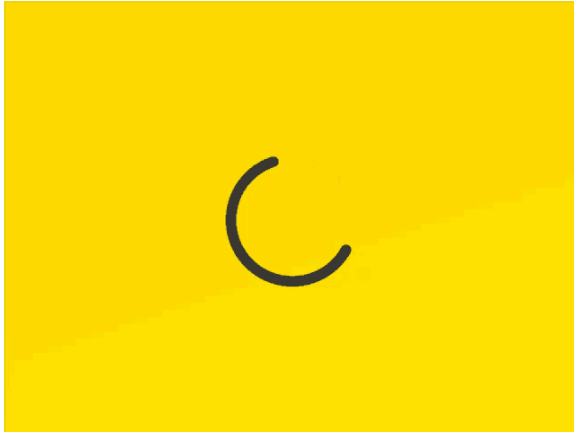


Abc phonics

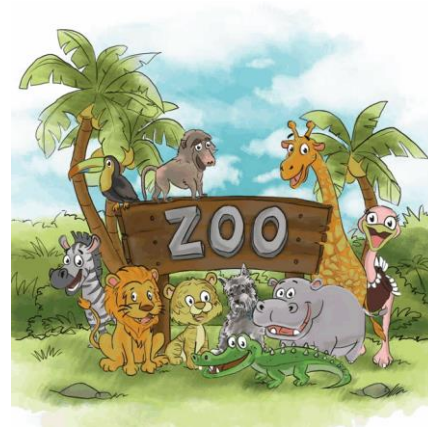
Yy

Zz

Yy is for **yellow**.



Zz is for **zoo**.



Abc phonics